

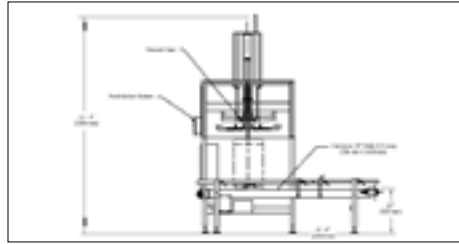
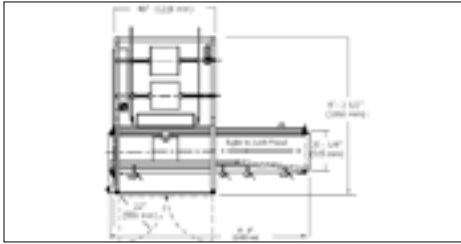


Series 1575 Poly Bag Inserter



BW Integrated Systems' fully automatic Series 1575 Poly Bag Inserter is designed to select a gusseted or flat tube polyethylene bag from a roll of perforated stock, insert it into an erected container (corrugated, plastic, etc.), and cuff the top over the container flaps.

Series 1575 Poly Bag Inserter



Sequence of Operation

An indexing conveyor is provided to receive erected and bottom-sealed cases from a case erector, and to properly position the case at the bag inserting station. When the case is in place, a signal is given to initiate action of the bag inserter. The machine accommodates a large range of film thicknesses.

To operate the Series 1575 Poly Bag Inserter, an operator loads a roll of bags into the machine and manually threads the web through two feed nip rolls. A motorized lifting mechanism raises a full roll of poly bags into position. Bags are fed automatically to a pre-determined separation point, which can be easily adjusted for different bag length

The bag is automatically separated and is opened by vacuum cups. When the bag is properly opened and a case is in position, a vertical mandrel inserts the bag into the case or other shipping container.

Power Requirements

- Input Power: 240/480 V, 3 phase, 60 Hz
- Control Circuit: 115 volt power is obtained through a control transformer supplied within the machine. Primary controls are 24 volt D.C., obtained through an internal power supply
- Maximum Draw: 240 volts = 17.4 amps
480 volts = 8.7 amps
- Optional Roll Lift: 240 volts = add 3.6 amps
480 volts = add 1.8 amps
(Includes 1/3 HP motor)

Air Requirements

- Operating Pressure: 80 psi (5.4 Atm)
- Line Pressure: Must be a minimum of 10 psi (.7atm) greater than operating pressure
- Max Free Air Consumption: 0.9 cu ft (25.4 liters) free air per cycle

Contact our experienced sales teams today for a comprehensive review of your application(s) and to see how our Series 1575 Poly Bag Inserter can benefit your company.

All sales are subject to our prevailing terms and conditions. Illustrations and specifications are subject to change without notice. Machines shown without guards are for illustrative purposes only. Guards are supplied and must be in place before operation.

Features

- Completely automatic - eliminates hand labor for bag insertion
- Runs gusseted or flat tube polyethylene bags
- Bags furnished on roll - large capacity reduces material handling costs
- Positive bag control - total control of bag from roll separation to bag insertion to cuffing
- Touchscreen controls to enhance efficiency and productivity
- Quality manufacturing provides years of dependable service
- High-speed servo package available

Specifications

Speed

Cycle speed is up to 18 cases per minute. Actual speed is dependent upon width and depth of case

Standard Case Size Range

Length: 8" - 20" (204-508 mm)
Width 4" - 16" (102-407 mm)
Height 10" - 22" (254-559 mm)*

Optional case size range available
* Depth is considered depth of case plus height of tallest flap

Bag Size Specification

Max Dia. (gusseted): 14" (356 mm)
Max Dia. (flat tube): 10 3/4" (273 mm)
Max Wid. (gusseted): 27 1/4" (692 mm)
Max Wid. (flat tube): 23" (584 mm)
Film Roll Core ID: 3" (77 mm)

** Wide body machine available for larger bags