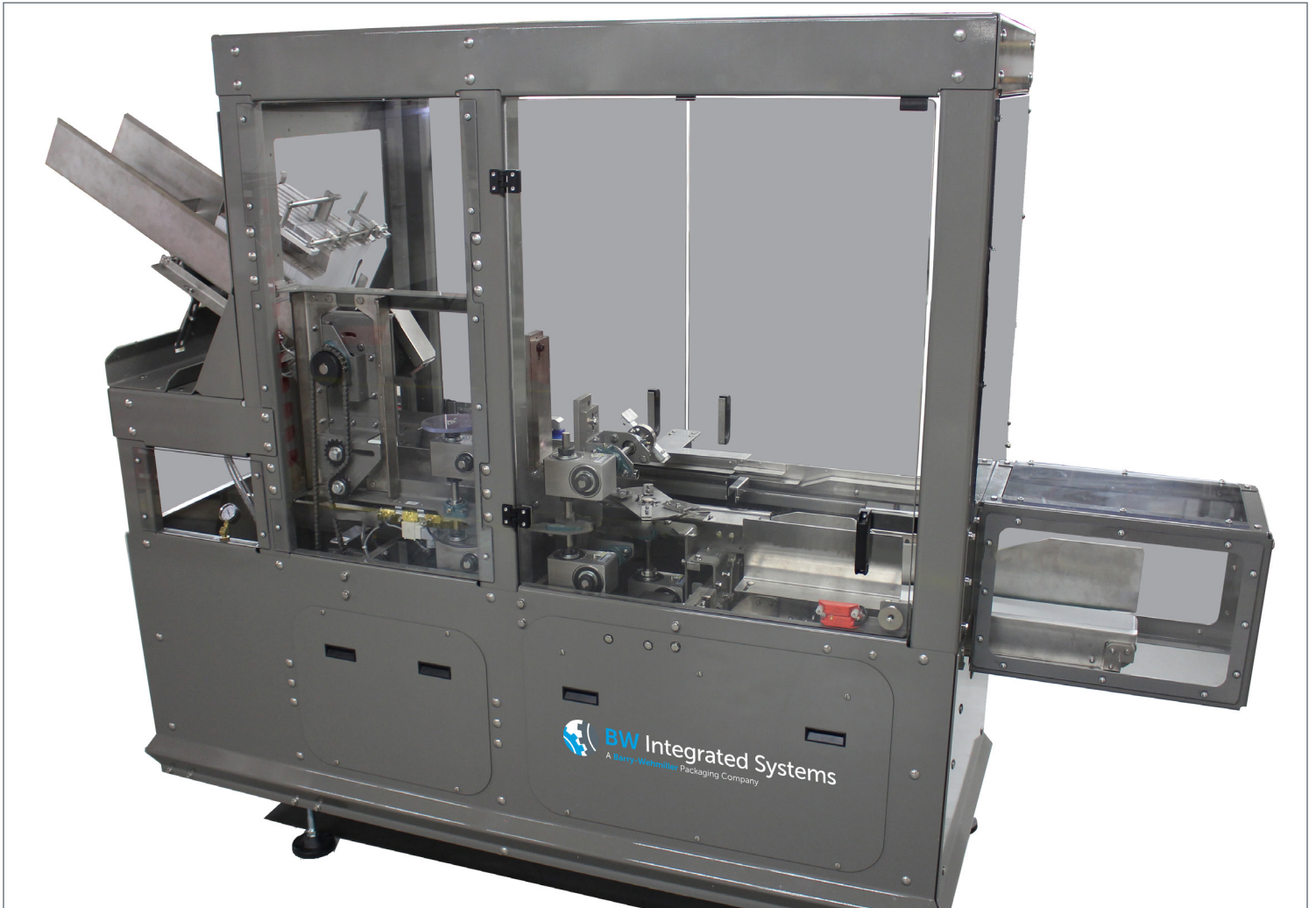


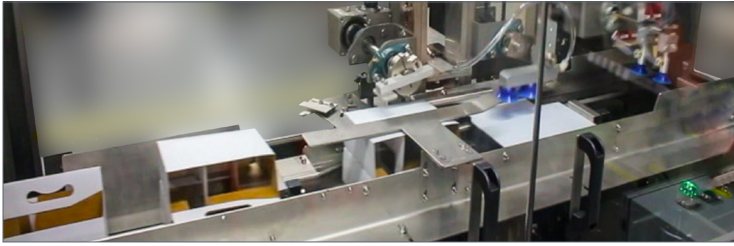


BCE 46 Basket Carrier Erector (*SWF Series*)



BW Integrated Systems' **SWF Series** BCE 46 Basket Carrier Erector automatically selects, erects, and locks the bottom of four to six pack basket carriers. This machine is equipped with a three-foot long, inclined magazine for loading the basket carrier blanks. An extended horizontal magazine is available, increasing the time between refilling.

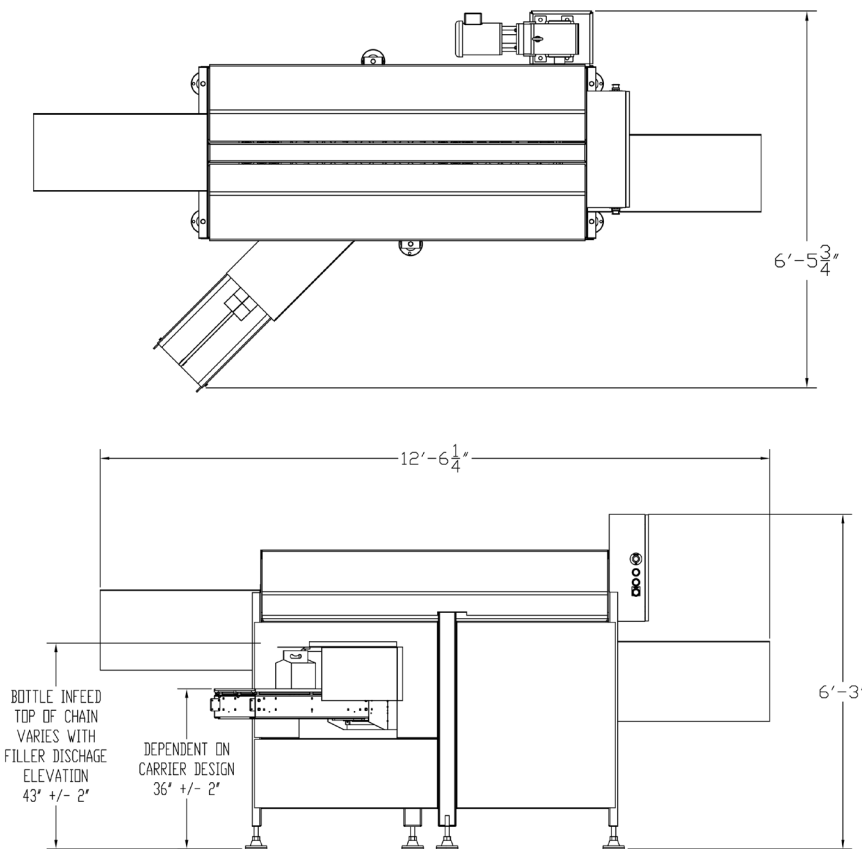
BCE 46 Basket Carrier Erector (SWF Series)



A rotary placer then picks the flat basket carrier from the magazine and places it into the transfer system, opening the basket carrier blank. A rotary blade then positively locks the basket carrier bottom in the open position.

The completed basket carriers are then discharged from the machine in an upright position, ready for transfer to the downstream conveyor (optional).

Contact our experienced sales teams today for a comprehensive review of your application(s) and to see how our BCE 46 Basket Carrier Erector can benefit your company.



Features

- Energy efficient, all-mechanical design
- Positive mechanism for locking the basket carrier bottom into place
- Operates as a stand-alone machine or as part of a packaging line
- Interlocked safety guarding stops the machine when a guard door is opened
- Up to 40 basket carriers per minute
- Rugged laser cut steel frame
- Allen-Bradley MicroLogix PLC
- Compact machine footprint

Specifications

Magazine Capacity

Approximately 300 to 350 basket carriers. Larger capacities are available.

Carrier Basket Size Range

4-pack = 5" x 5" x 8 1/4" (approximately)

6-pack = 7 1/2" x 5" x 8 1/4"

Electrical Requirements (Service)

115/208 - 230 VAC
1 to 3 phase
50 to 60 Hz

Air Requirements

Operating Pressure - 65 to 85 psi

Vacuum

Standard high-efficiency PIAB
COAX vacuum generator (requires approximately 4 SCFM at 80 psi)

Optional electric powered vacuum pump

All sales are subject to our prevailing terms and conditions. Illustrations and specifications are subject to change without notice. Machines shown without guards are for illustrative purposes only. Guards are supplied and must be in place before operation.