



**NIGRELLI**  
by **bw** packaging

**END-OF-LINE**

**CASE PACKING**



## TL 20 TOP LOAD CASE PACKER

Video 

Video 

Video 

Nigrelli's TL 20 Top Load Case Packers are the ultimate solution for handling a diverse range of product styles. From cartons and tubs to bags and bottles, our innovative design can handle it all. Tailored to your specific needs, our interchangeable product gripping heads are custom-designed for your specific application and offer a choice of mechanical grippers, vacuum grippers, or even a combination of both. And when it comes to product placement options, whether it's RSCs, trays, plastic crates, or layer pads, we've got you covered.

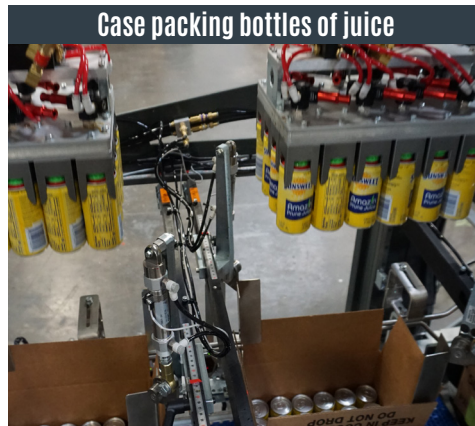
# Nigrelli TL 20 Top Load Case Packer

## DESCRIPTION

Maximize the efficiency of your production space with our versatile layout configurations. Our TL Series modular design allows for easy configuration of in-line, reverse, or right-angle flow systems. By integrating with BW Integrated Systems' top-of-the-line case erectors and sealers, you can create a comprehensive packaging solution. Plus, our washdown construction options make installation within the processing area a breeze.

## FEATURES

- Up to 25 placements (picks) per minute
- Versatile, multi-product / container packing solution for soft, flexible, rigid, and irregular shaped products and packages
- Compact footprint
- Easy line integration
- Quick product changeovers
- Packs various RSC, HSC, and display-style cases
- Simple integration with our broad line of case erectors and sealers
- Gentle product handling
- Various gripper/pick heads customized to application
- Stainless steel construction
- Centralized grease blocks or automatic lubrication systems
- Product handling devices include converging, diverging, accumulating, and positioning devices
- Servo-controlled product indexing/accumulating feed conveyors
- Automatic case positioning conveyor
- PLC controlled
- Full operator safety
- Rugged, reliable, low-maintenance construction



**Contact** our experienced sales teams today for a comprehensive review of your application(s) and to see how our Top Load Case Packers can benefit your company.